

WHAT IS THE ECOLINE?

It's a Crossflow-turbine with standardized sizes. There are 16 different types of sizes. By cooperation with the Technical University of Graz (TUG) we could improve the degree of efficiency of single-celled and double-celled Crossflow turbines. The big advantage is that we can produce it cheaper than others because of the standardized sizes, the cooperation with the TUG and major experiences in the field of hydro-power.

ADRESS

Maschinenbau Unterlercher GmbH
Plon 34, 9961 Hopfgarten i. Def.
Austria

CONTACT

+43 4872 5638

unterlercher.b@maschinenbau-unterlercher.at
unterlercher.o@maschinenbau-unterlercher.at

<https://www.maschinenbau-unterlercher.at/en/>

ECOLINE

We are happily announcing the new series of Maschinenbau Unterlercher's Crossflow-turbine, the ECOLINE. Ready to install solutions from 1 to 100 kW.

TYPES OF ECOLINE

ECO 200

The ECO 200 is the smallest turbine. It's used from 3 to 60 meters height of fall and for 10 to 90 liters per second of water volume. There are 4 different types of ECO 200, varying from 40 to 100 mm of cell width.

ECO 350

The ECO 350 is the compact, powerful all-rounder. It's used from 3 to 40 meters height of fall and for 50 to 700 liters per second of water volume. There are 7 different types of ECO 350, varying from 100 to 600 mm of cell width.

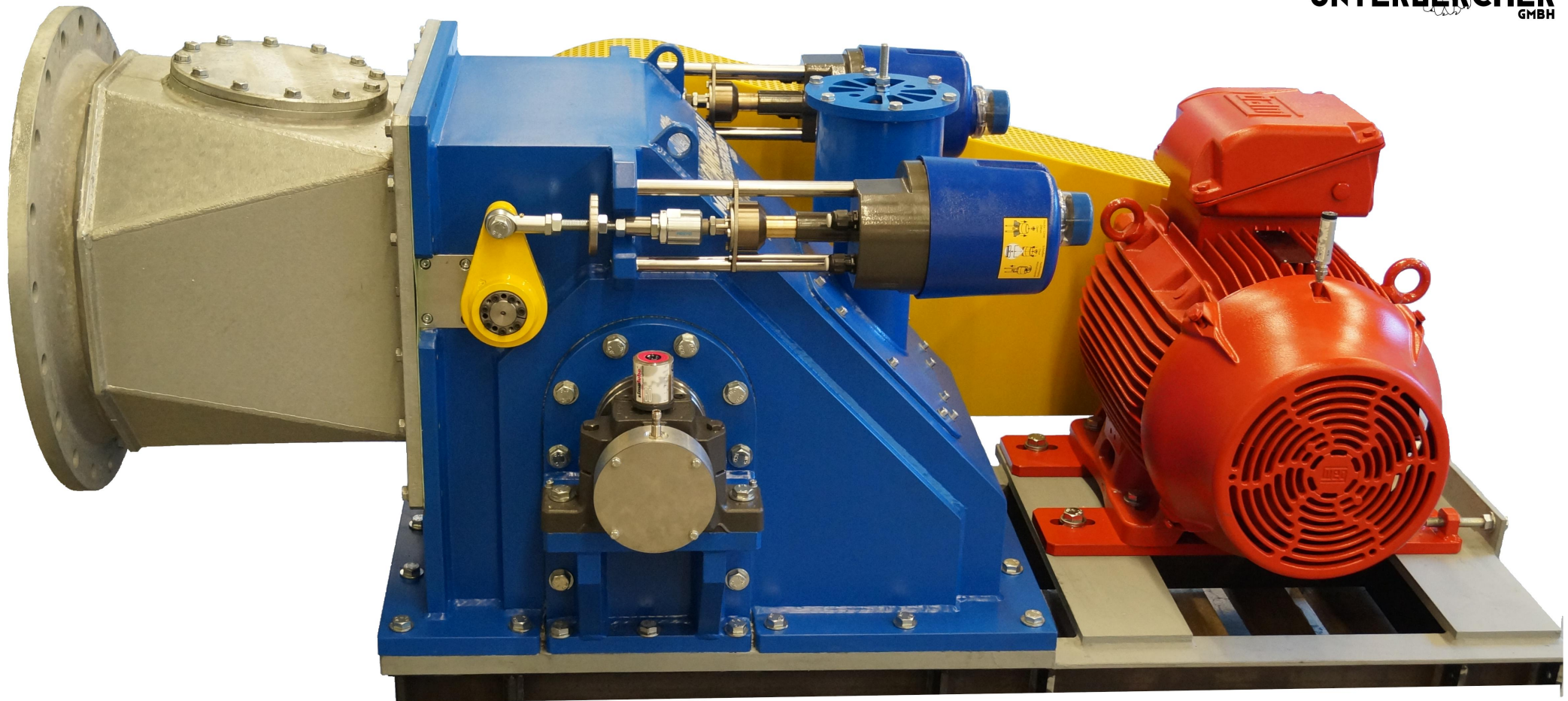
ECO 500

The ECO 500 is the largest turbine mainly used for high level of water volume. It's used from 3 to 20 meters height of fall and for 300 to 1500 liters per second of water volume. There are 5 different types of ECO 500, varying from 500 to 1200 mm of cell width.

INFORMATION

- Available in 16 standard sizes
- Plug & Play-system, simply to install and it is ready to work
- Adjustments to the existing conditions are possible according to customer requirements
- For isolated or parallel usage
- Controlling and generator included
- Optionally with safety-shutoff device
- 1-cell with the option of 2-cells
- Impeller diameter 200, 350 or 500 mm
- Comes with detailed installation- and operating manual

**“Clean energy
for
generations“**



Kennlinie Crossflow-Turbine 2013



WASSERKRAFTANLAGEN
SONDERMASCHINEN
AUTOMATISIERUNG

www.wasserkraft-unterlercher.at

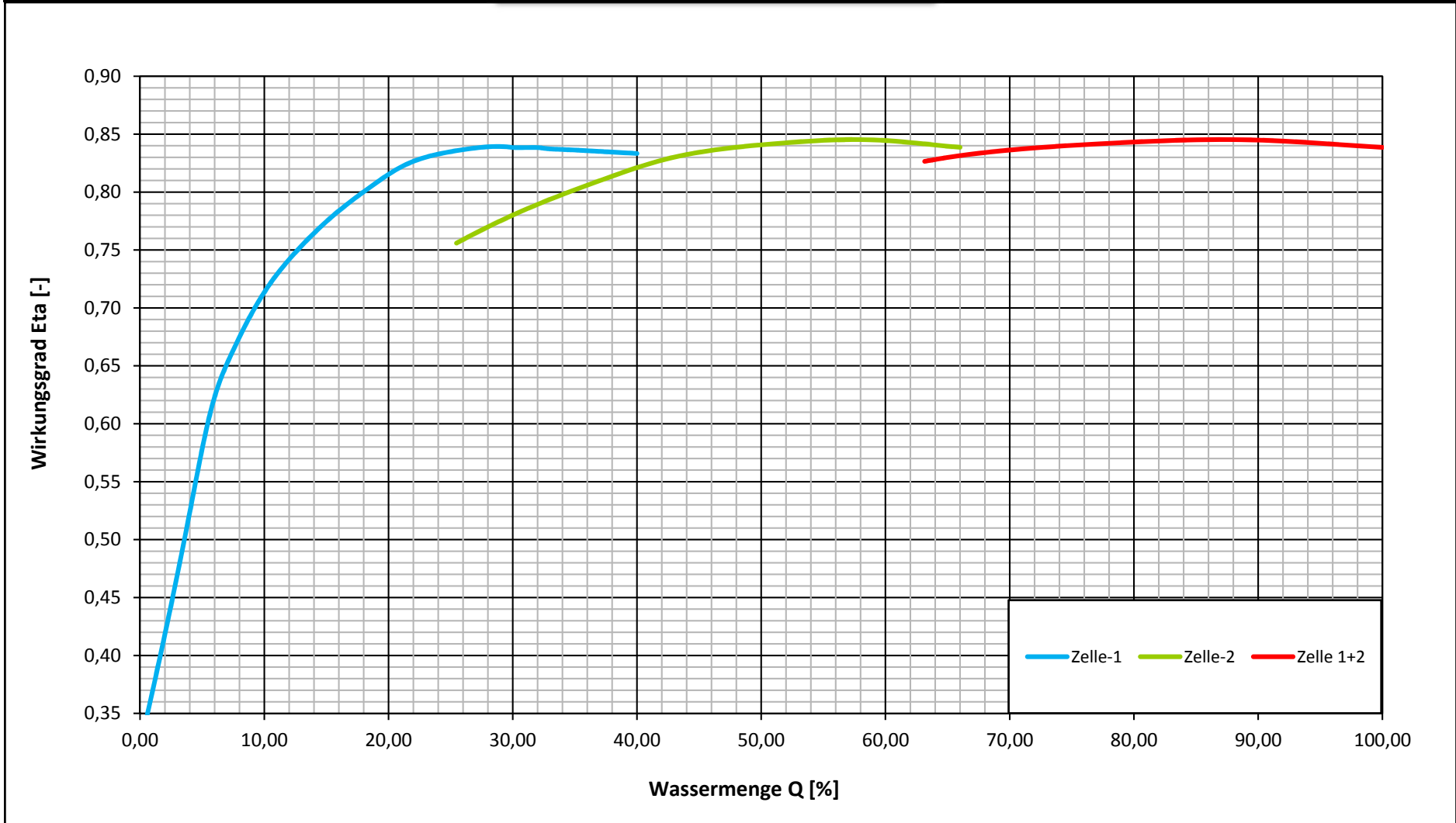
MIT WASSER ZUR KRAFT



HFM

Institute for Hydraulic Fluidmachinery TU GRAZ

Kennlinie CFT-Turbine



Kennfeld Ecoline

